

RECESSED DOOR STRAIGHTENER



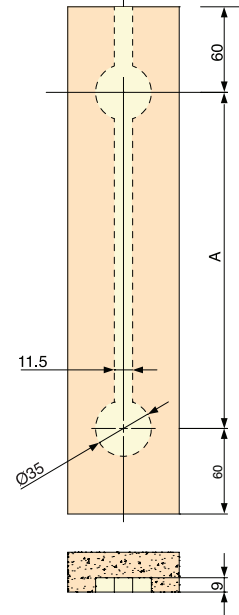
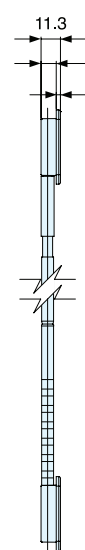
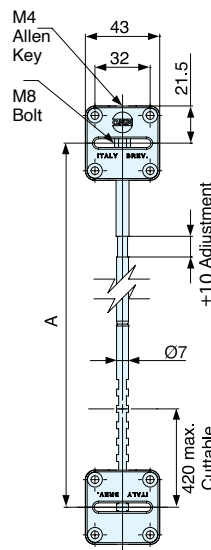
DSR213

- Partially Recessed Door Straightener with Cover Caps.
- ± 10 mm adjustment can be made from the top of the door with a M4 Allen Key (included) or from the back of the door with a M8 slot wrench (included).
- Min. door thickness 16 mm (5/8")
- Requires 8 M4 (U.S. #8) flathead countersunk wood screws for installation.
- Note: Sold in Boxes of 25 pieces.

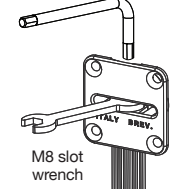


Plastic cover caps included

Box (pcs)	Materials	Finish
25	Rod: Steel,	Plain
	Adjuster: Zinc	Nickel
	Covers: PVC Plastic, PPT Plastic	White



Adjustment with M4 Allen Key



M8 slot wrench



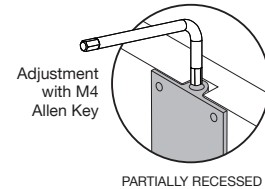
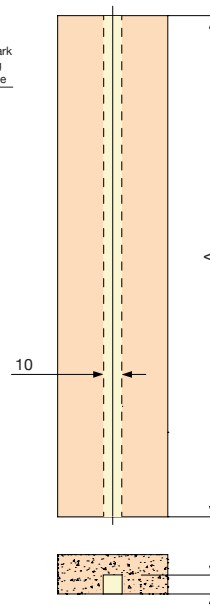
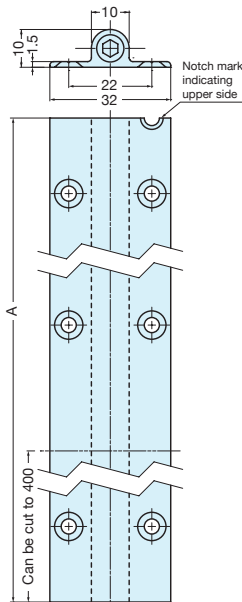
Item No.	Min. Door Thickness	Adjust	Center Distance (A)	Door Length
DSR213-1524-25	16 mm (5/8")	± 10 mm (3/8")	1104 mm (43-7/16") ~ 1524 mm (60")	1224 mm (48-3/16") ~ 1644 mm (64-3/4")
DSR213-1930-25			1510 mm (59-7/16") ~ 1930 mm (76")	1630 mm (64-3/16") ~ 2050 mm (80-11/16")
DSR213-2300-25			1880 mm (74") ~ 2300 mm (90-9/16")	2000 mm (78-3/4") ~ 2420 mm (95-1/4")
DSR213-2700-25			2280 mm (89-3/4") ~ 2700 mm (106-5/16")	2700 mm (94-1/2") ~ 2820 mm (111")

SURFACE MOUNT DOOR STRAIGHTENER (Retrofit)

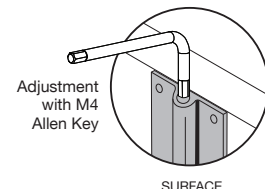


DSR701

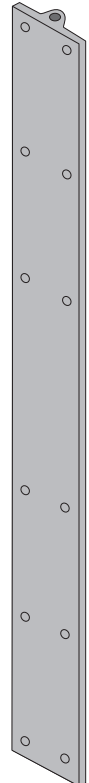
- Can be partially recessed or surface mounted to the back of the door.
- ± 10 mm adjustment can be made from the top of the door with a M4 Allen Key (included).
- Min. door thickness 16 mm (9/16").
- Requires M4 (U.S. #8) flathead wood countersunk screws for partially recessed installation or wood panhead screws for surface installation.
- Can be cut from the bottom up to 400mm.
- Note: Sold in Boxes of 10 pieces.



PARTIALLY RECESSED



SURFACE



Item No.	Min. Door Thickness	Adjust (mm)	Length Min-Max (A)	Box (pcs)	Materials	Finish
DSR701-1830/B-10	16 (5/8")	± 10 mm (3/8")	1430 mm (56-5/16") to 1830 mm (72-1/16")	10	Rod: Steel Casing: Aluminum	Black
DSR701-1830/S-10						Silver
DSR701-2200/B-10			1800 mm (70-7/8") to 2200 mm (86-5/8")			Black
DSR701-2200/S-10						Silver