



# Hettich



SCAN FOR FURTHER INFORMATION OR VISIT  
[WEB.HETTICH.COM/EN-US/PRODUCTS/RUNNER-SYSTEMS/QUADRO#/](http://WEB.HETTICH.COM/EN-US/PRODUCTS/RUNNER-SYSTEMS/QUADRO#/)

NEW

## RUNNERS FOR WOODEN DRAWERS

# Quadro 5D Imperial



### FULL EXTENSION WITH INTEGRATED SILENT SYSTEM

Quadro drawer runners deliver unparalleled drawer convenience with their sleek, concealed design. Built for long-lasting performance using a steel ball bearing system, they offer smooth operation and durability. The slide-on installation with catches allows for five different adjustments for a perfect fit. Enhance functionality with the optional Push-to-Open feature. The synchronized bar ensures both runners activate simultaneously, seamlessly blending modern, handleless furniture designs with practical ease.

### TECHNICAL DETAILS

- Slide on installation with 2D catches for height and side adjustment, integrated depth adjustment, integrated tilt adjustment, integrated radial adjustment
- Integrated Silent System
- Adjustments all tool-less: height adjustment up to + 3 mm, side adjustment up to +/- 1.5 mm, depth adjustment up to + 2 / - 1 mm, tilt adjustment up to + 4 mm and radial adjustment up to +/- 1.5 mm
- Optional: Push to open Silent opening system
- Optional: synchronization / multi synchronization for Push to open Silent
- Optional: pull-out shelf support / pull-out shelf locating catch
- Platform concept: identical cabinet body, drawer and front panel dimension for Quadro partial and full extension runners for slide on installation
- Suitable for drawers with a side profile thickness of up to 16 mm
- Load capacity to EN 15338, Level 3; up to 90 lbs dynamic (100 lbs static), as per ANSI / BHMA 156.9 grade 1 specifications on a 21" length slide
- Galvanized steel

### NOTE:

- 2D catch must be ordered separately
- Push to open Silent for Quadro V6 5D with Silent System can be ordered separately
- Pull-out shelf support can be ordered separately
- Synchronization / multi synchronization for Push to open Silent can be ordered separately
- Using the pull-out shelf support reduces drawer length by 10 mm (nominal length - 20 mm)

## DESIGN OPTIONS



Metal rear bracket



2D front mount 5/8"



2D front mount 1/2"

### Description

Description	Item #
QV6 30 SFDP/ 9" 5D LI 152594	9374861
QV6 30 SFDP/ 9" 5D RE 15259	9374862
QV6 30 SFDP/ 9" 5D Set	9375480
QV6 30 SFDP/12" 5D LI 15259	9374863
QV6 30 SFDP/12" 5D RE 15259	9374866
QV6 30 SFDP/12" 5D Set	9375481
QV6 30 SFDP/15" 5D LI 15259	9374867
QV6 30 SFDP/15" 5D RE 15259	9374898
QV6 30 SFDP/15" 5D Set	9375482
QV6 30 SFDP/18" 5D LI 15260	9374899
QV6 30 SFDP/18" 5D RE 15260	9374900
QV6 30 SFDP/18" 5D Set	9375483
QV6 30 SFDP/21" 5D LI 15260	9374901
QV6 30 SFDP/21" 5D RE 15260	9374902
QV6 30 SFDP/21" 5D Set	9375484
QV6 30 SFDP/24" 5D LI 15260	9374903
QV6 30 SFDP/24" 5D RE 15260	9374904
QV6 30 SFDP/24" 5D Set	9375485

### QUADRO 2D FRONT FIXING CLIPS

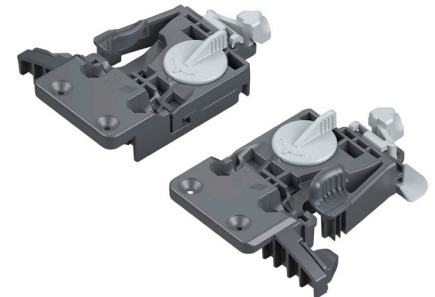
Quadro V6 2D Front Fixing Clip 2D 1/2" Set Bulk	9306535
Quadro V6 2D Front Fixing Clip 2D 5/8" Set Bulk	9306536
Quadro V6 2D Front Fixing Clip 2D 1/2" Top mt Set Bulk	9306539
Quadro V6 2D Front Fixing Clip 2D 5/8" Top mt Set Bulk	9306540
FRONT FIXING CLIP SET 2D 5/8" w/Spacer	9324200

### REAR BRACKET

Rear Attachment Set	9308864
---------------------	---------



2D top mount 5/8"



2D top mount 1/2"



SCAN FOR FURTHER  
INFORMATION OR VISIT  
[HETTICH.COM/SHORT/40970A](https://www.hettich.com/short/40970A)

Hettich America  
4295 Hamilton Mill Road Suite 400  
Buford, GA 30518

1.800.777.1772

[info@hettichamerica.net](mailto:info@hettichamerica.net)

[www.hettich.com](https://www.hettich.com)