

# Docking Drawer®

Docking Drawer Capped  
Canisters Tear Sheet

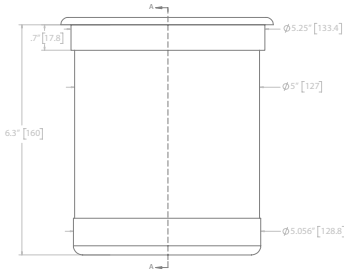
Revision 12



Docking Drawer Stainless Steel Capped Canisters pair perfectly with Blade Series in-drawer outlets, transforming vanity drawers into safe, organized styling stations. Crafted from high-quality, heat-resistant stainless steel, each canister features a flexible, removable cap that accommodates a wide range of styling tools. The included silicone canister band creates a snug, rattle-free fit that helps prevent shifting or tipping, even in angled drawers, while also enabling easier top-down installation. The result is a refined balance of safety, function, and intentional design.

# Docking Drawer Stainless Steel Capped Canisters

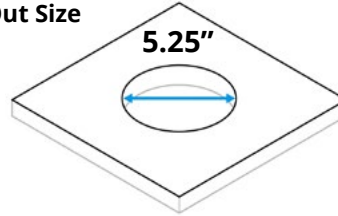
## 5" Canister 0024-00505



### Capped Bottom with Band

Canister Width **5.25"** (133.4mm)

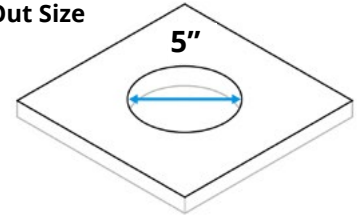
Cut Out Size



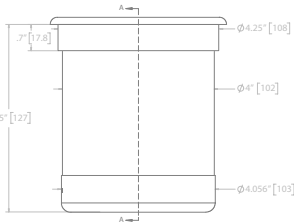
### Open Bottom without Band

Canister Width **5"** (127mm)

Cut Out Size



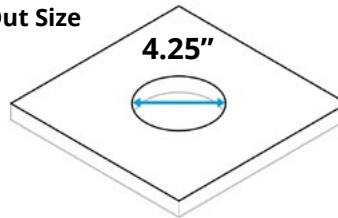
## 4" Canister 0024-00504



### Capped Bottom with Band

Canister Width **4.25"** (108mm)

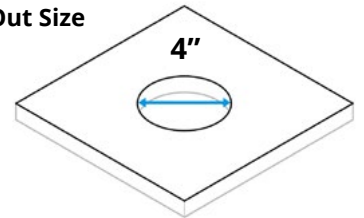
Cut Out Size



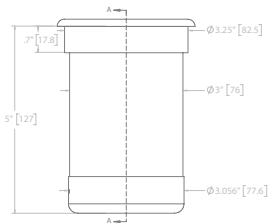
### Open Bottom without Band

Canister Width **4"** (102mm)

Cut Out Size



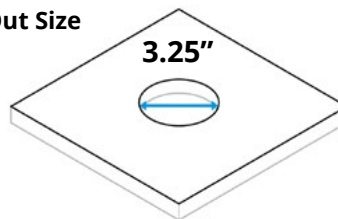
## 3" Canister 0024-00503



### Capped Bottom with Band

Canister Width **3.25"** (82.5mm)

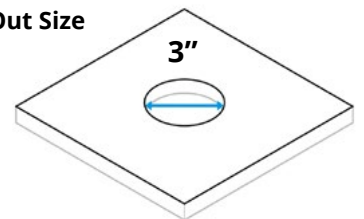
Cut Out Size



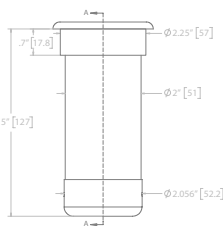
### Open Bottom without Band

Canister Width **3"** (76mm)

Cut Out Size



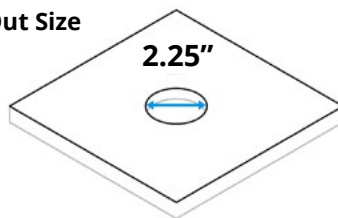
## 2" Canister 0024-00502



### Capped Bottom with Band

Canister Width **2.25"** (57mm)

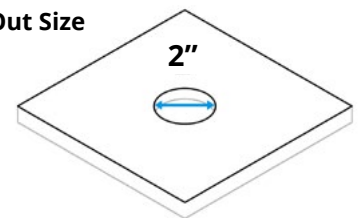
Cut Out Size



### Open Bottom without Band

Canister Width **2"** (51mm)

Cut Out Size



## Ready to Order?

Source directly from Docking Drawer or from one of our distribution partners. [Learn more.](#)

Project Name:

Where to Source:  Docking Drawer  Distributor

Lead Time - 2 weeks    Freight - FOB San Ramon    Warranty - 1 Year    [Terms & Conditions](#)